



**An Envirocom Presentation for**

Merri-bek City Council

# Recycle Right



**Merri-bek**  
City Council

# Housekeeping



**Merri-bek**  
City Council

- Please ask any questions through the Question and Answer function and I will answer them during the question breaks.
- Feel free to start asking questions now.
- Say 'Hi' and introduce yourself to the group (using the Question and Answer function)
- A copy of the slides will be sent out early next week
- Evaluation survey



# Overview



**Merri-bek**  
City Council

- What is waste
- Issues with landfill
- Recycling process
- What can/cannot be recycled through kerbside bins
- Recycling myths
- Recyclable material facts

# The state of waste



Merri-bek  
City Council

1.25 million tonnes is placed in the garbage bin and ends up in landfill

Only 43% of Victoria's waste is diverted from landfill - recycling and food and garden organics



# Merri-bek State of waste

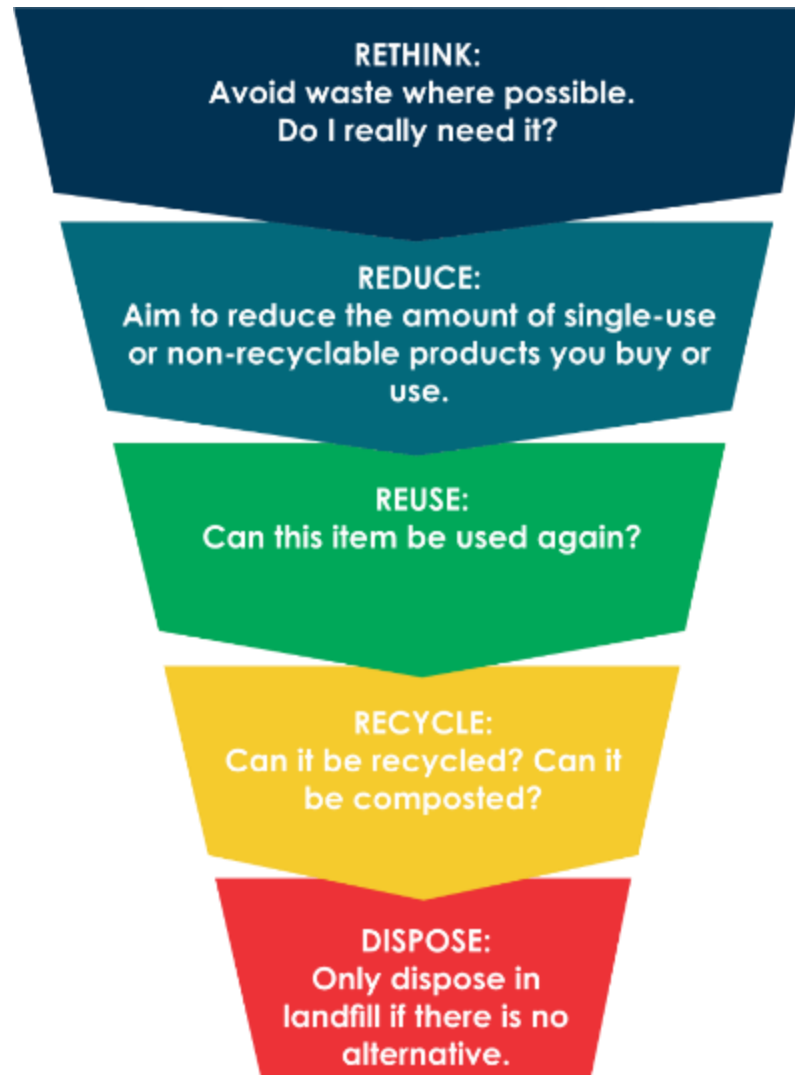
The recycling and organics collections have diverted 49% of all kerbside waste away from landfill (2020-21)

Type	Garbage	Recycling	Organics	Total
Per person per week	3 kgs	1.5 kgs	1.3 kgs	6 kgs
Per person per year	158 kgs	85 kgs	69 kgs	313 kgs
Per household per week	7 kgs	4 kgs	3 kgs	14 kgs
Per household per year	374 kgs	202 kgs	163 kgs	739 kgs

# The Waste Hierarchy



**Merri-bek**  
City Council



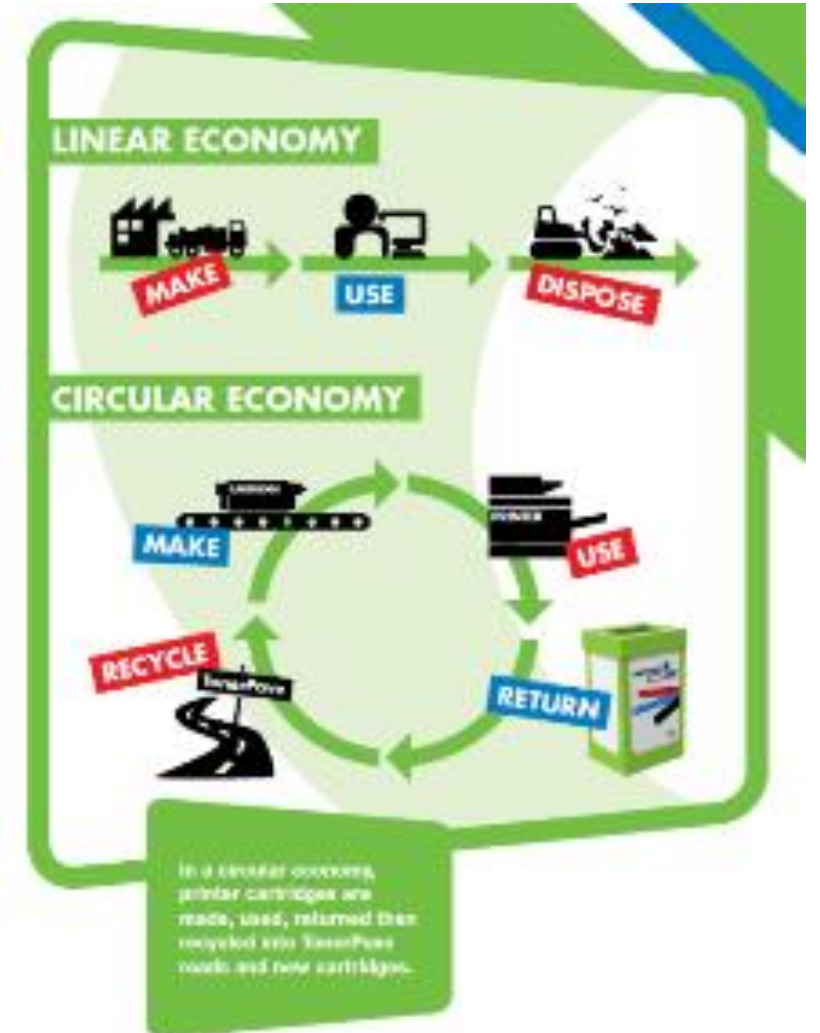
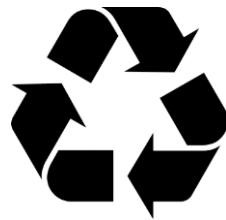
# Is recycling important??



Merri-bek  
City Council

OF COURSE! But recycling should not be our first option when thinking about disposal.

*Taking something **old** =  
making something **new***





# Circular Economy



Merri-bek  
City Council

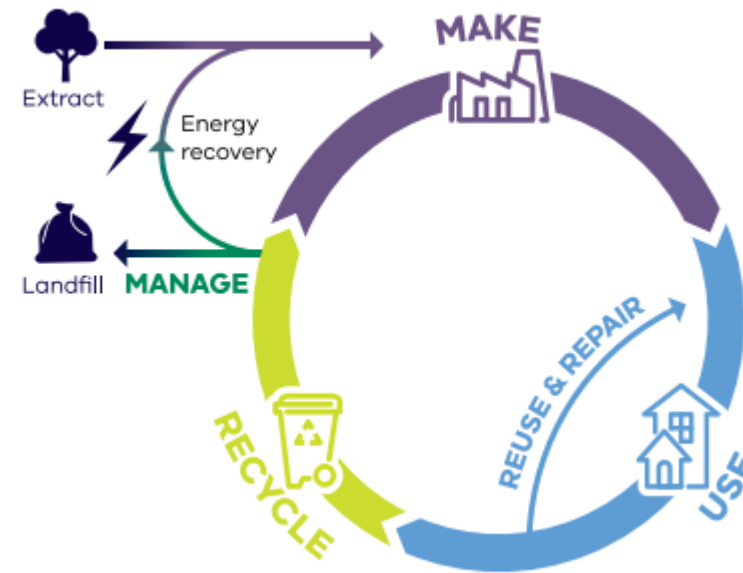


Figure 2: Resource flows in a circular economy



# Activity – How long to break down?



Merri-bek  
City Council

Guess how long it takes each item to break down in landfill!

**2- 5 weeks**

**6 weeks**

**5 years**

**50 years**

**50 years**

**80-200 years**

**450 years**

**1 million + years**



# Activity – How long to break down?



Merri-bek  
City Council

Guess how long it takes each item to break down in landfill!

**2- 5 weeks**

**6 weeks**

**5 years**

**50 years**

**50 years**

**80-200 years**

**450 years**

**1 million + years**



1 million +  
years



50 years



2-5 weeks



50 years



6 weeks



5 years



450 years



80-200years

# What can be recycled?



Merri-bek  
City Council



Paper & Cardboard



Hard Plastic Bottles and  
Containers



Steel Cans & Aerosols



Glass Bottles and  
Jars



Aluminum Cans and Foil

# What can't be recycled?



Merri-bek  
City Council

- › Soft plastics (plastic bags, chip packets)
- › Electronics (E-waste)
- › Material or fabrics (clothes)
- › Sharps objects (needles)
- › Drinking glass or glass panes
- › Coffee cups
- › Nappies
- › Food
- › Plants and wood
- › Tissues/Serviettes
- › Plastic bags



# Recycling Tips



**Merri-bek**  
City Council

- Flatten down cardboard
- Squeeze the air out of your plastic bottles, then replace the lid
- Remove steel lids from glass bottles and jars and place in your recycling bin separately
- Don't overfill your recycling bin – keep the lid closed



# Question Break



**Merri-bek**  
City Council

Up next:

- What happens to my recycling?
- Recycling myths
- Golden rules for recycling



# Where does my recycling go?



**Merri-bek**  
City Council

Recyclable materials placed in the yellow-lidded bin are taken to a Material Recovery Facility (MRF), run by VISY, which is located in Heidelberg

At the MRF, materials are separated and baled, before being sent to a reprocessing facility for manufacture into new products





# Materials Recovery Facility (MRF)



Merri-bek  
City Council



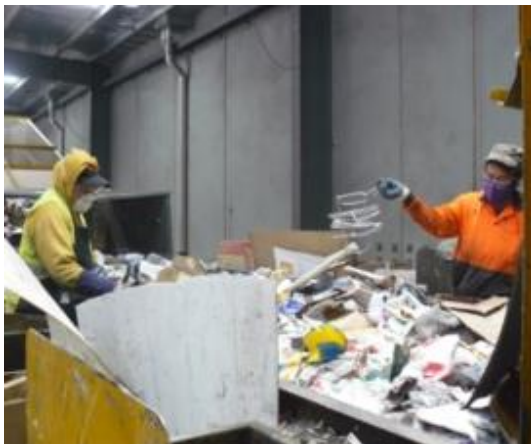
Weigh bridge



Open pit



Conveyor belts



Hand sorting



Magnets – steel

# Materials Recovery Facility (MRF)



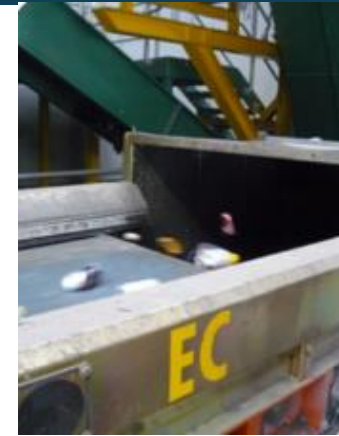
Merri-bek  
City Council



Air classifier – paper



Trommels – glass



Eddy Current – Aluminium



Laser – Plastics



Baled and transported

# Top 5 Recycling errors

71% of Australian's report that they are confident in recycling at home, however research shows that 94% are incorrectly recycling at least one item!

1. Putting your recycling inside a plastic bag
2. Throwing away beverage cartons (some Council's accept these, but some don't!)
3. Putting old/ broken drinking glasses in the recycling bin
4. Putting single use cutlery in the recycling bin
5. Thinking biodegradable or 'compostable' plastic items can be put in the recycling bin

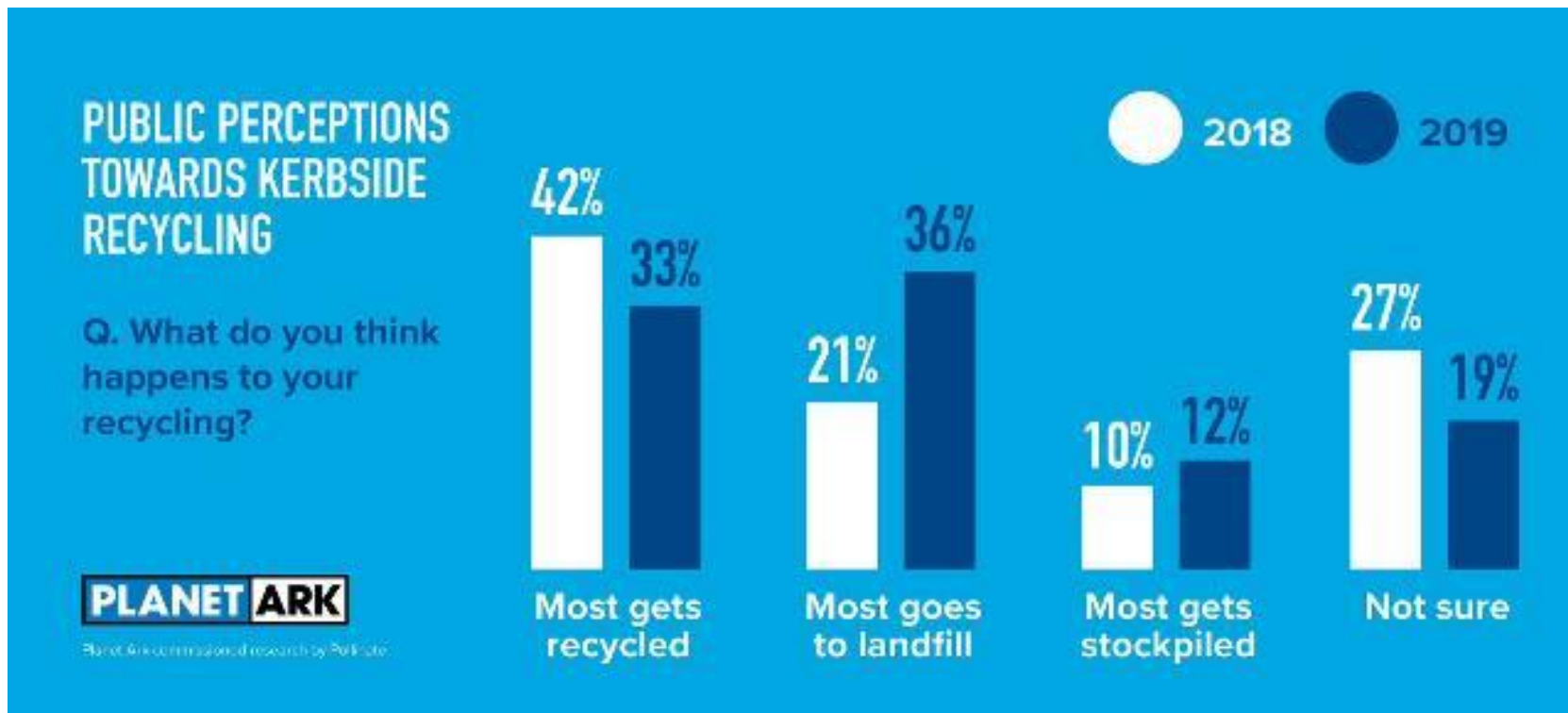
# Recycling Myths!



Merri-bek  
City Council

## Myth #1 – “All recycling goes to landfill”

Recycling **does** get recycled!



# Recycling Myths!



**Merri-bek**  
City Council

## Myth #2 – “My recycling responsibilities are done once its in the bin”

Unless you're buying it back, you're not fully recycling.

### CHOOSE YOUR ACTIONS

#### GOOD

##### CLOSE THE RECYCLING LOOP

- ✓ At the supermarket look for products or packaging with recycled content.
- ✓ Explore Planet Ark's [Recycled Product Directory](#).
- ✓ On **Saturday 16 November 2019** get involved in [Buy It Back Day](#).

#### BETTER

##### IMPROVE BUSINESS PROCUREMENT

- ✓ Start small and switch to 100% [Australian recycled office paper](#).
- ✓ At work implement a [recycled content procurement policy](#).
- ✓ Contact your council and ask if they have a recycled content procurement policy.

#### BEST

##### REDUCE & REUSE

- ✓ Only buy what you really need.
- ✓ Avoid over packaged products and single-use items.
- ✓ Repair, buy [secondhand](#), [swap](#) or [share](#).



# Recycling Myths!



Merri-bek  
City Council

Myth #3 – “All plastic with a triangle symbol can be put in my kerbside recycling bin”



## Australasian Recycling Label



# Recycling Myths!



Merri-bek  
City Council

## Myth #4 – “The only way to recycle is via my Council recycling bin”

There are other ways to recycle!





# Recycling Myths!



**Merri-bek**  
City Council

## Myth #5 – “It’s too hard to recycle at work”

- › Half of Australian businesses think they don’t do enough from a sustainability point of view, the Planet Ark Business Recycling website provides tips to overcome the biggest barriers to workplace recycling, whether that be insufficient support from management, lack of staff training and motivation or simply the location of the bins and signage.



# Recycling Myths!



**Merri-bek**  
City Council

Myth #6 – “Food scraps are not an issue in landfill”

Food scraps cause Greenhouse Gas emissions in landfill



# Recycling Myths!



Merri-bek  
City Council

Myth #7 – “Recycling is my contribution to the environment”

Avoid, Reduce and reuse first, then recycle – remember the waste hierarchy

Recycling is important, but it shouldn't be our first choice



# Why can't some things go in?



**Merri-bek**  
City Council

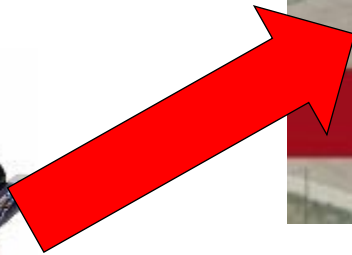
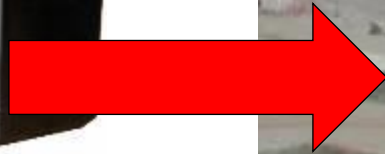
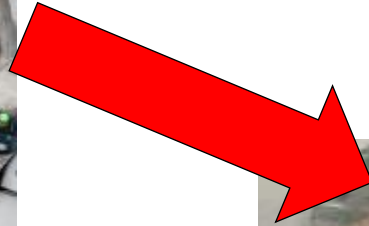




# Why can't some things go in?



**Merri-bek**  
City Council



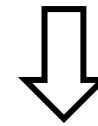
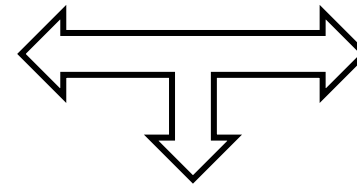
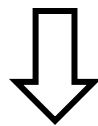
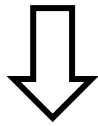
# Recycled Products



Merri-bek  
City Council

Facilities that make recycled products are called “Reprocessing factories”

Reprocessing factories break open the bales and shred/clean/melt down the material to make into recycled goods.



# What to do with everything else?



**Merri-bek**  
City Council

Op Shops / Charity store

Garage Sale, give to a neighbour, friend or relative

Batteries – Aldi supermarket, Coles and Woolworths Batteryworld

Officeworks – ink cartridges, mobile phones, e-waste, batteries, pens and more

Harvey Norman – televisions and computers

Supercheap Auto – car batteries and motor oil

Priceline Pharmacy – Cosmetic packages

Detox Your Home Events – hazardous liquid waste, such as motor oil and paint

<https://www.sustainability.vic.gov.au/detoxyourhome>

Transfer stations also take a number of items - <https://www.moreland.vic.gov.au/living-in-moreland/waste-and-recycling/waste-and-recycling-locations/>

Councils A-Z guide and website – <https://www.merri-bek.vic.gov.au/living-in-merri-bek/waste-and-recycling/>

Recycling Near You website - <https://recyclingnearyou.com.au/>

Eco Active – Recycling Collection Service in Merri-bek – costs may apply



# Still unsure?



**Merri-bek**  
City Council



## Bins and collection services

Learn about your garbage, recycling and food and garden organics bin services and options for hard waste collection.

[Read more →](#)

## A-Z Guide to waste and recycling

Search ...



## A-Z guide to waste and recycling

Find different ways to discard your household waste sustainably. This list includes both Council and external services with options for common household items, and how to recycle or safely dispose of them.

[Read more →](#)



## Reducing waste

This section has information to help you adopt more sustainable purchasing habits. You can find tips on avoiding general waste and food waste, and where you can repair, reuse, borrow, and swap items.

[Read more →](#)



## Recycling stations

Drop off a range of household items into our yellow recycling cabinets for free at our



## Waste and recycling locations

Find your nearest recycling or waste transfer



## Clean streets and neighbourhoods

Council removes graffiti, litter and dumped

# Questions?



Merri-bek  
City Council

